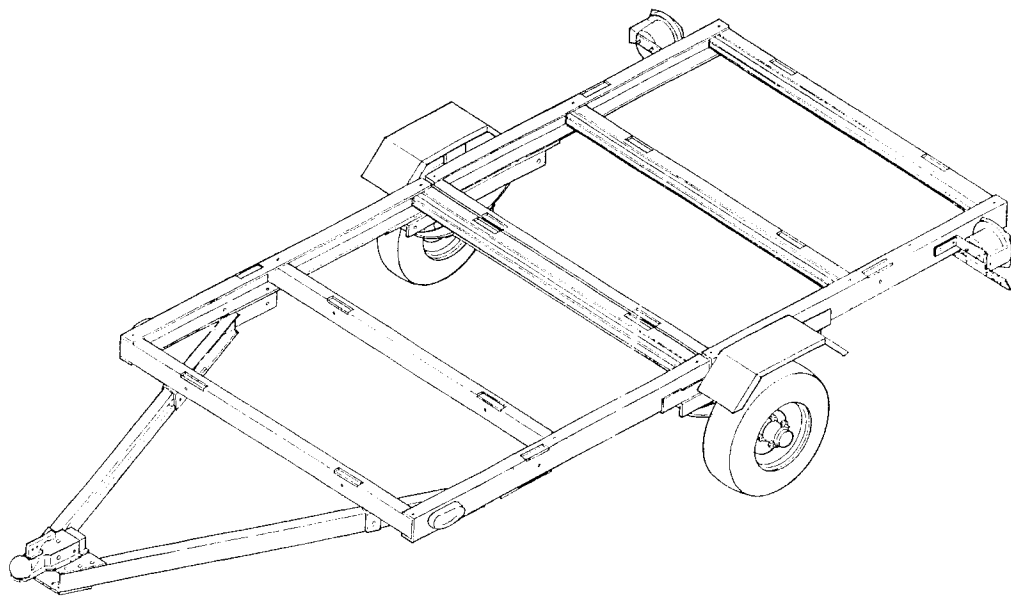


OWNER'S INSTRUCTIONS HEAVY DUTY TRAILER KIT



SPECIFICATION:

Item No. : LCI-852T

Bed Frame: 4' x 8'

Overall Length: 137"

Shipping Weight: 242 LBS

Max. Load Capacity: 1,845 LBS

Tire: 5.3-12 Tubeless, 6PR

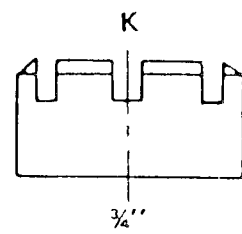
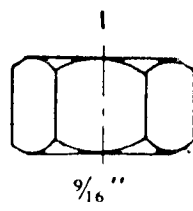
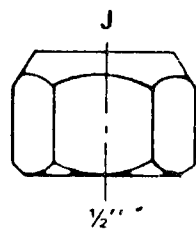
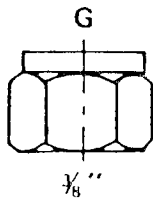
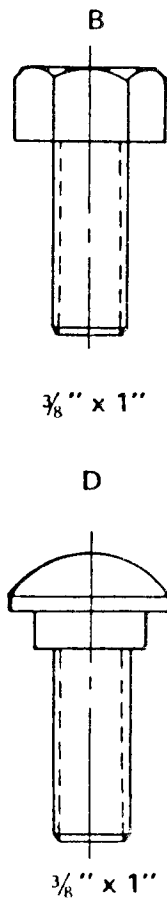
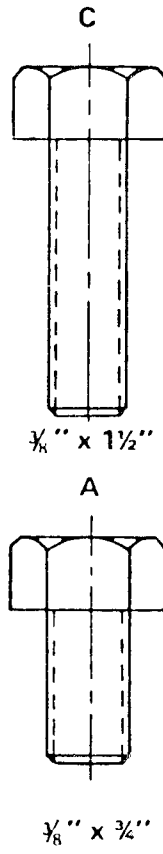
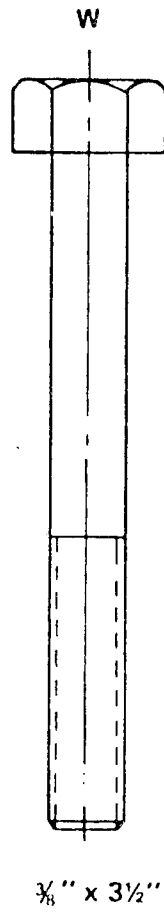
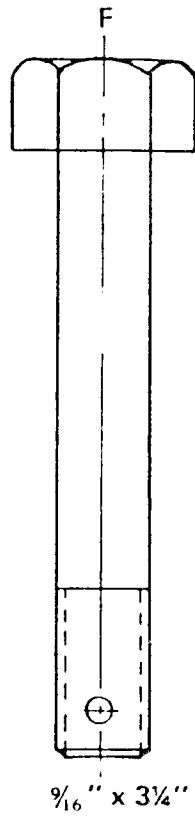
Coupler Capacity: Class II 3,500 LBS. Max Gross Load. fit For 2" Ball

GAWR: 2,090 LBS With 5.30-12 (D) Tire 12 x 4 Rim At 80 PSI Cold

GVWR: 2,090 LBS

LCI-852T TRAILER PARTS LIST

PARTS				NO.	QTY.	DESCRIPTION	PART NO.
NO.	QTY.	DESCRIPTION	PART NO.	28R	1	Right Tail Light	
				29	1	Safety Pin	
				31	2	Grease Fitting	
1FL	1	Front Left Side Rail		HARDWARE			
1FR	1	Front Right Side Rail					
1RL	1	Rear Left Side Rail					
1RR	1	Rear Right Side Rail					
2A	1	Cross Member					
2B	5	Cross Member					
3L	1	Left Connecting Rail		NO.	QTY.	DESCRIPTION	PART NO.
3R	1	Right Connecting Rail		A	32	3/8" x 3/4" Bolt	
4	2	Angle Iron		B	15	3/8" x 1" Bolt	
5	1	"T" Plate		C	1	3/8" x 1 1/2" Bolt	
6	1	Coupler Base		D	4	3/8" x 1" Carriage Bolt	
7	1	Coupler		E	2	9/16" x 1 1/2" Bolt	
8	1	Safety Chain		F	4	9/16" x 3/4" Bolt	
9	2	"L" Latch		G	68	3/8" Nylon Nut	
12L	1	Spring Hanger (Left)		I	4	9/16" Nylon Nut	
12R	1	Spring Hanger (Right)		J	8,10	Lug Nut	
14	2	Spring Plate		K	2	Castle Nut	
15	2	Spring		L	8	3/8" Spring Washer	
16	1	Axle		M	7	3/8" Flat Washer	
17	4	"U" Bolt		N	2	3/4" Flat Washer	
18	2	Hub		O	2	5/32" Cotter Pin	
19	2	Tire/Wheel Assembly		Q	2	3 mm "R" Pin	
20	2	Bearing		R	4	4 mm Self Tapping Screw	
21	2	Dust Cap		S	1	2 mm "R" Pin	
22	2	Fender		U	1	1/4" Self Tapping Screw	
23	2	Fender Seat		V	2	9/16" Nylon Nut	
24	2	Side Running Light		w	2	3/8 x 3-1/2 Bolt	
26	2	Tail Light Bracket		X	6	3/8" x 1 1/4" Bolt	
27	1	License Plate Bracket					
28L	1	Left Tail Light					



Read the instructions carefully and follow them step-by-step for easy assembly. You'll find a complete parts list on the previous page. Average assembly time is approximately 3 hrs. You'll need the following tools to assemble your Heavy Duty Trailer.

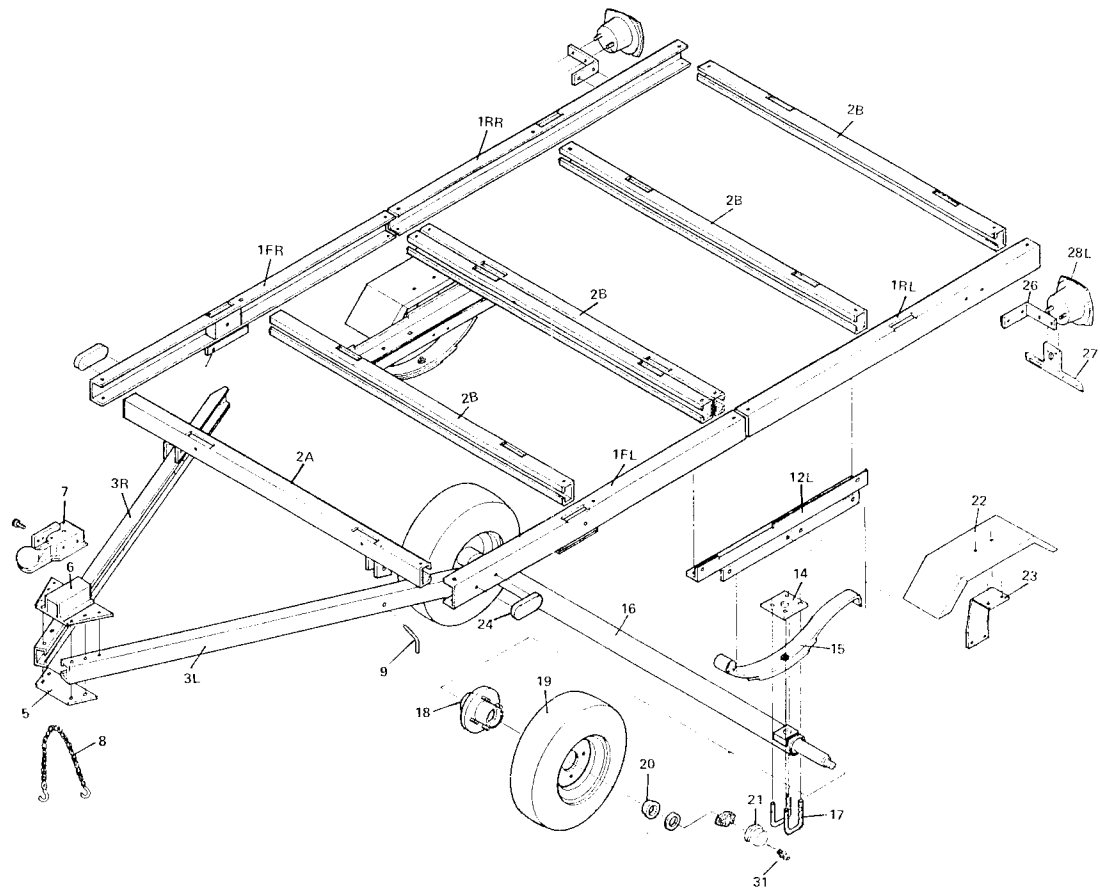
TOOLS NEEDED:

9/16" box end wrench
9/16" open end wrench
3/4" socket or lug wrench
Electric Drill or hand drill
(for installing plywood base)

Pliers
Channel lock pliers
Screwdriver
5/16" drill bit for installing
side rails

NOTE:

1. In assembling trailer parts, they are called out by standing at rear of trailer and looking toward tongue.
2. The nuts and bolts shouldn't be completely tightened until the entire trailer is assembled. Installing the 3/4" plywood base, which you will have to supply, is the last step after tightening down all the nuts and bolts. Moreover, all the nuts and bolts should be checked periodically for tightness . . . and you should retighten the lug bolts on the wheels after the first 20 miles of use.

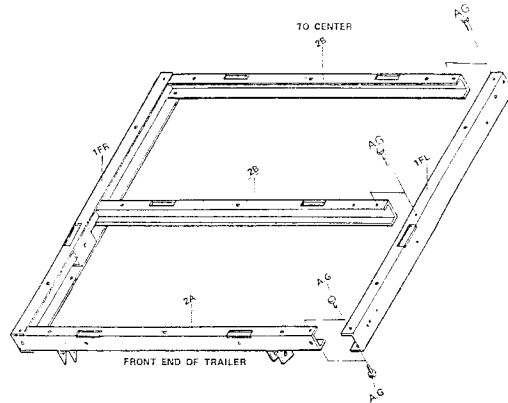


STEP 1

1. Lay out front side rail (1FL, 1FR), cross member (2A, 2B), as shown.
2. Assemble (1FL, 1FR, 2A, 2B), by using 3/8" x 3/4" bolt (A), nylon nut (G).

STEP. 1

PARTS NEEDED		
NO.	Q'TY	DESCRIPTION
1FL	1	Front Left Side Rail
1FR	1	Front Right Side Rail
2A	1	Cross Member
2B	2	Cross Member
A	8	3/8" x 3/4" Bolt
G	8	3/8" Nylon Nut

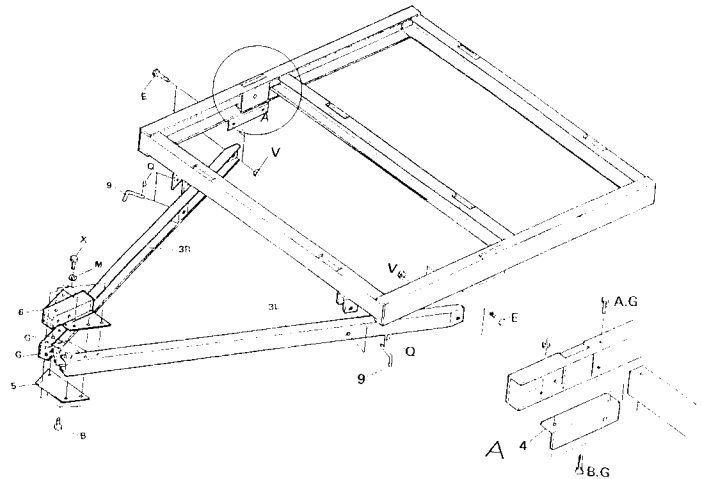


STEP 2

1. Attach angle iron (4) to side rail (1FR, 1FL) with cross member (2B) by using 3/8" x 1" bolt (B) and 3/8" nylon nut (G) as shown A.
2. Attach right and left connecting rail (3L, 3R) through cross member (2A) first by using "L" latch (9) and putting 3 mm "R" pin (Q) insert the hole of latch (9), then attach angle iron (4) by using 9/16" x 1 1/2" bolt (E) and 9/16" nylon nut (V) as shown.
3. Assemble coupler base (6) with connecting rail (3L, 3R) by using 3/8" x 1 1/4" bolt (X), 3/8" flat washer (M) and 3/8" nylon nut (G), then "T" plate (5) under connecting rail (3L, 3R) by using 3/8" x 1" bolt (B), 3/8" flat washer (M) and 3/8" nylon nut (G) as shown.

STEP 2

PARTS NEEDED		
NO.	Q'TY	DESCRIPTION
3L	1	Left Connecting Rail
3R	1	Right Connecting Rail
4	2	Angle Iron
5	1	"T" Plate
6	1	Coupler Base
9	2	"L" Latch
B	8	3/8" Bolt
E	2	9/16" x 1-1/2" Bolt
G	14	3/8" Nylon Nut
M	6	3/8" Flat Washer
Q	2	3 mm R Pin
V	2	9/16" Nylon Nut
X	6	3/8" x 1-1/4" Bolt

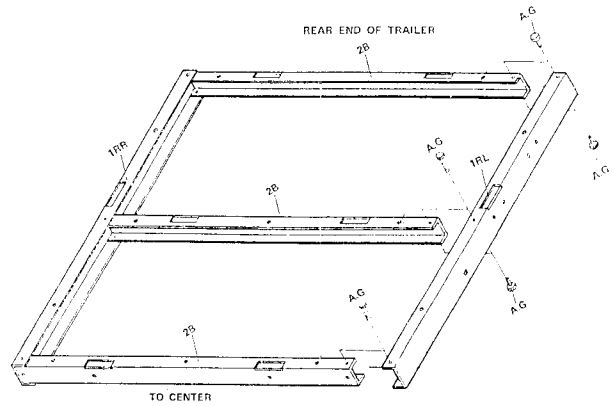


STEP 3

1. Lay out rear side rail (1RL, 1RR), three cross member (2B) as shown.
2. Assemble (1RL, 1RR, 2B) by using 3/8" x 3/4" bolt (A) 3/8" nylon nut (G) as shown.

STEP 3

PARTS NEEDED		
NO.	Q'TY	DESCRIPTION
1RL	1	Rear Left Side Rail
1RR	1	Rear Right Side Rail
2B	3	Cross Member
A	10	3/8" x 3/4" Bolt
G	10	3/8" Nylon Nut

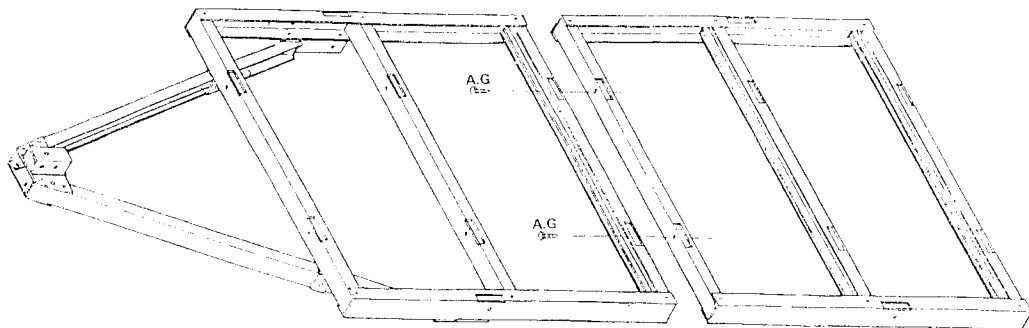


STEP 4

1. Assemble front portion and rear portion using 3/8" x 3/4" bolt (A) and 3/8" nylon nut (G) as shown.

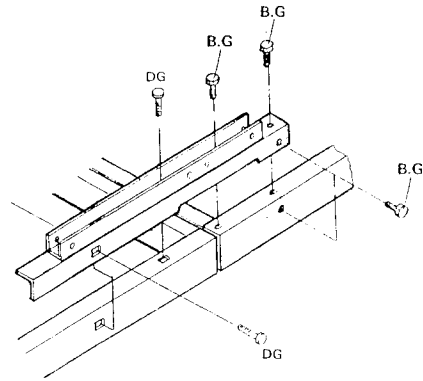
STEP 4

PARTS NEEDED		
NO.	Q'TY	DESCRIPTION
A	2	3/8" x 3/4" Bolt
G	2	3/8" Nylon Nut



STEP 5

PARTS NEEDED		
NO.	Q'TY	DESCRIPTION
12L	1	Left Spring Hanger
12R	1	Right Spring Hanger
B	6	3/8" x 1" Bolt
D	4	3/8" Carriage Bolt
G	10	3/8" Nylon Nut

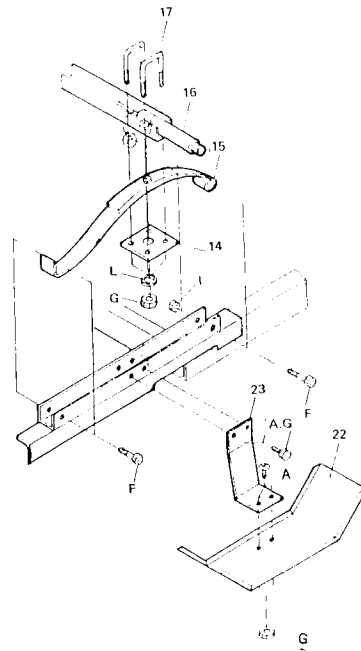


STEP 5

1. Turn the frame upside down.
2. Assemble spring hanger (12L, 12R) to front side rail (1FL, 1FR) by using 3/8" x 1" bolt (B) and 3/8" nylon nut (G) as shown. Do the same step on the other side.
3. Assemble spring hanger (12L, 12R) to rear side rail (1RR, 1RL) by using 3/8" x 1" carriage bolt (D) and 3/8" nylon nut (G) as shown. Do the same step on the other side.

STEP 6

PARTS NEEDED		
NO.	Q'TY	DESCRIPTION
14	2	Spring Plate
15	2	Spring
16	1	Axle
17	4	"U" Bolt
22	2	Fender
23	2	Fender Seat
A	8	3/8" x 3/4" Bolt
F	4	9/16" x 3-1/4" Bolt
G	16	3/8" Nylon Nut
I	4	9/16" Nylon Nut
L	8	3/8" Spring Washer



STEP 6

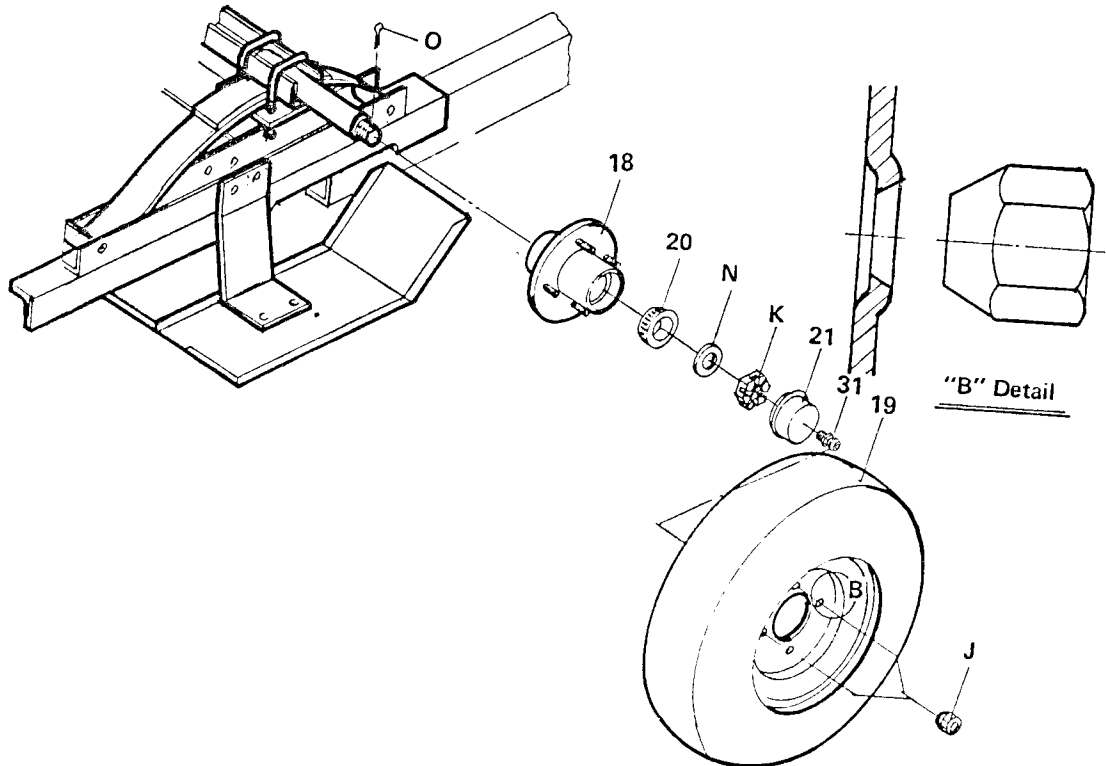
1. Assemble fender seat (23) to spring hanger (12L, 12R) by using 3/8" x 3/4" bolt (A), 3/8" nylon nut (G), then fix fender (22) by using 3/8" x 3/4" bolts, 3/8" nylon nut (A.G.).
2. On each side, put the spring (15) on the spring hanger (12L, 12R) with spring eyes forward, secure with 9/16" x 3-1/4" bolt (F) by going through spring (15) and lock the bolt with 9/16" nut (I).
3. Place axle (16) on the top of spring (15). Put spring plate (14) under spring using "U" bolt (17) passing through axle (16), spring (15) and spring plate (14) then lock with 3/8" spring washer (L) and nylon nut (G) as shown.

STEP 7

PARTS NEEDED		
NO.	Q'TY	DESCRIPTION
18	2	Hub
19	2	Tire/Wheel Assembly
20	2	Bearing
21	2	Dust Cap
31	2	Grease Fitting
J	10	Lug Nut
K	2	Castle Nut
N	2	3/4" Flat Washer
O	2	5/32" Cotter Pin

STEP 7

1. Carefully slide hub (18) over spindle at each end of axle (16) and push on outer bearing (20) and 3/4" flat washer (N), then castle nut (K), tighten them snugly. Back off slightly so that wheel can move freely.
 2. Push a 5/32" cotter pin (O) through the hole in the end of the spindle then split cotter pin, 1/4 fill the dust cap (21) with automotive grease then press it onto hub (18), then fix grease fitting (31) to the end hole of the dust cap (21) as shown.
 3. Put tire/wheel assembly (19) on hub set (18), then lock with four or five lug nut (J) tighten with socket or lug wrench to 90 ft.lb. (very tight) as shown.
- Note: Air valve should be on outside of rim.

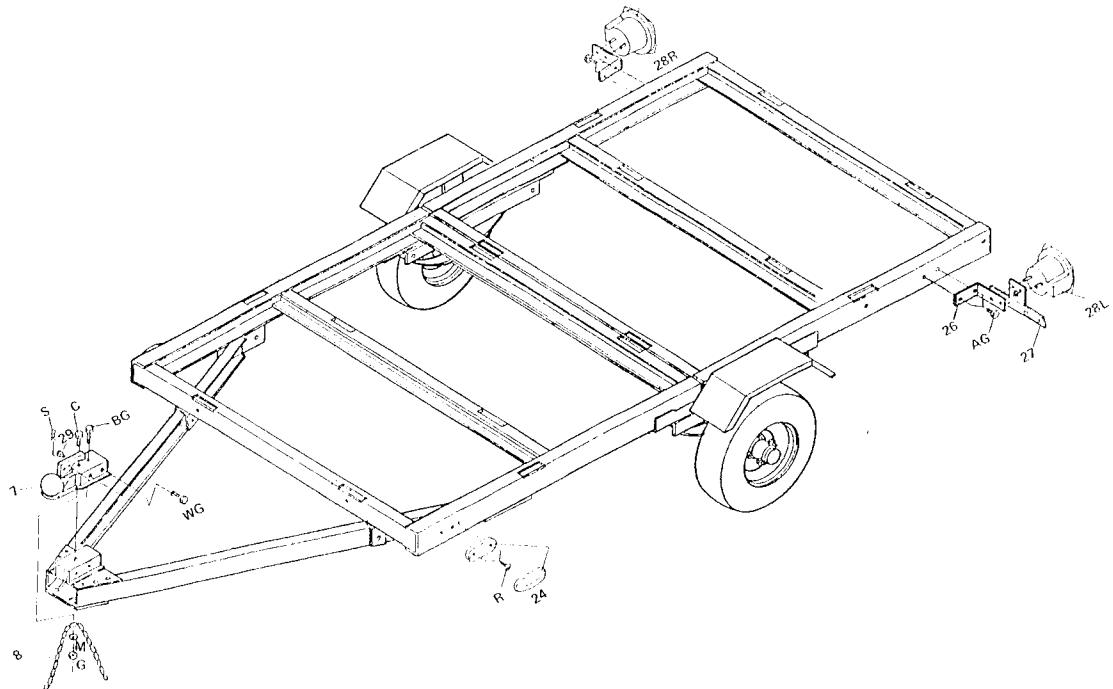


STEP 8

PARTS NEEDED		
NO.	Q'TY	DESCRIPTION
7	1	Coupler
8	1	Safety Chain
24	2	Side Running Light
26	2	Tail Light Bracket
27	1	License Plate Bracket
28L	1	Left Tail Light
28R	1	Right Tail Light
29	1	Safety Pin
A	4	3/8" x 3/4" Bolt
B	1	3/8" x 1" Bolt
C	1	3/8" x 1-1/2" Bolt
G	8	3/8" Nylon Nut
M	1	3/8" Flat Washer
R	4	4 mm Self Tapping Screw
S	1	2 mm "R" Pin
W	2	3/8" x 3-1/2" Bolt

STEP 8

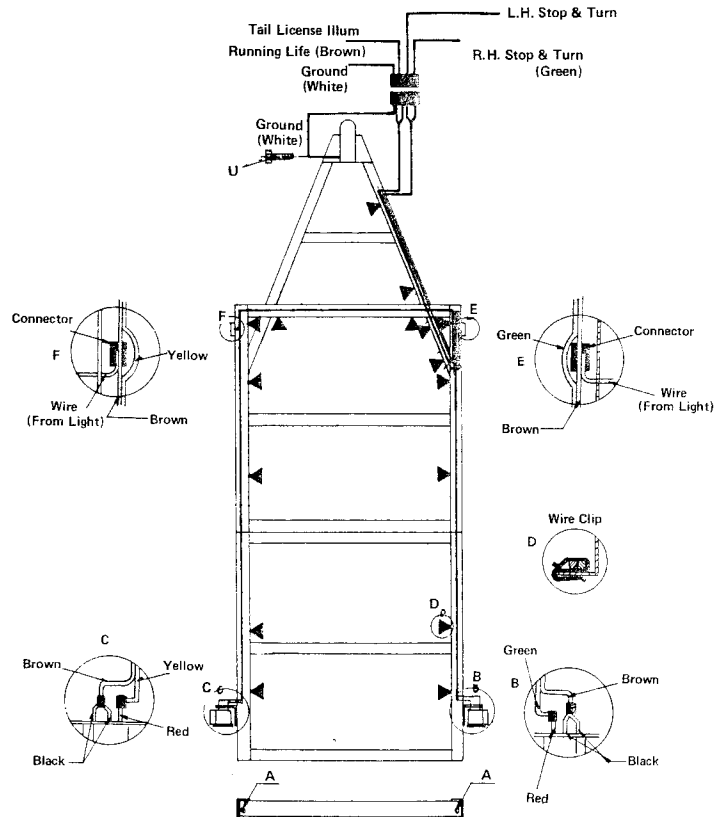
1. Turn over the trailer assemble
2. Bolt coupler (7) to coupler base (6) by using 3/8" x 3-1/2" bolt (W) and 3/8" nylon nut (G), passing 3/8" x 1" bolt (B) through the rear hole of coupler (7) and coupler base (6) lock with 3/8" nylon nut (G), then lock coupler trigger by using safety pin (29) and "R" pin (S) to fix it.
3. Attach safety chain (8) to coupler (7) with 3/8" x 1-1/2" bolt (C) by going through the center link of the chain, lock with 3/8" flat washer (M) and 3/8" nylon nut (G).
4. Attach side running light (24) by opening the lense of light, run wire lead through the center of side rail, then lock light to side rail with tapping screw (R) on each side.
5. Assemble tail light bracket (26) to rear end of side rail (1RL, 1RR) by using 3/8" x 3/4" bolt (A) and 3/8" nylon nut (G) then install license plate bracket (27) and left tail light (28L) (with clear lense for light) with washer and nut then install right tail light (28R).



STEP 9

TRAILER LIGHT KIT WIRING DIAGRAM AND INSTRUCTION

Check alignment of all parts and install the 4-wire vehicle connector in the trunk area of your car. Locate the connector plug near the hitch ball and lay out wires (wires must through cross members' hole). Connect the white wire to the frame or body of the car; connect the brown wire to the tail light by stripping, wrapping and taping connector; similarly connect the yellow wire to the left signal and stop light wire and the green wire to the right signal and stop light wire. Some foreign vehicles may require an adaptor to convert their 5 wire system to wire vehicle connector.



1. Attach white ground wire at plug end of wiring harness to the small hole in right tongue with safety tapping screw.
2. Leave about 18" of wire beyond the coupler and lay out wire on the inside of right tongue to the side rail joint (as shown), then from this joint, split the yellow/brown wire and green/brown wire. Make yellow/brown go through cross member to left running light, make green/brown wire go to the right running light.
3. Connect the wire lead from the running lights to the brown wire on each side with the wire connector. Use pliers to squeeze the connector closed.
4. Push on wire clips to hold wires down the side rails of the trailer.
5. Cut yellow/brown and green/brown wires to appropriate lengths and strip ends of wires $\frac{3}{4}$ ".
6. Make taillight connections as per color code:

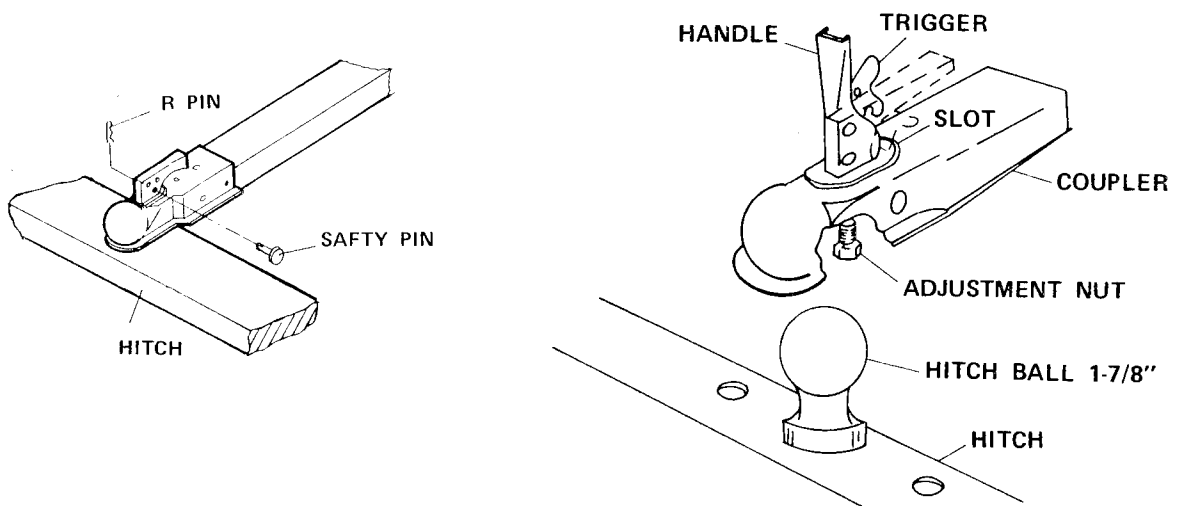
Left side	Right side
Yellow-Red wire	Green-Red wire
Brown-Two black wires	Brown-Two black wires
7. Or insert wire in color coded holes in rear of tail lights.

SPECIAL NOTICE FOR COUPLER

Only use a 2" ball hitch on your towing vehicle. Pull trigger and lift handle. Place coupler over trailer hitch ball and push down on handle until trigger locks in slot.

Pull up and down on the coupler to see if the ball is fitting snugly in the coupler. There should be no play between the ball and coupler. If there is play, tighten the adjustment nut until no play is present. If the nut is too tight, the handle will not lock.

NOTE: To reduce friction between the ball hitch and coupler, apply a layer of multi-purpose lithium grease over ball hitch. Wipe off excess grease when not in use to avoid staining clothes.



TRAILER LICENSING NOTICE

Some states (provinces) may consider that this trailer kit is a specially constructed or homemade vehicle for registration, licensing and/or titling purposes.

The M.C.O. (Manufacturer's Certificate of Origin) supplied with your trailer should be filled out and signed by the dealer transferring ownership to you.

When licensing your trailer, you will need the signed M.C.O. a purchase invoice, cash register receipt, or bill of sale showing the purchase and retail sales tax or use tax collection by the retailer.

Take these to your local Department of Motor Vehicle and upon payment of the appropriate state (provinces) fees, you will be issued a title, registration and license plate (if required). Some states (provinces) will require inspection of the assembled and finished trailer kit before issuing a titleregistration/license.

If you require additional information or guidance on licensing or titling, please consult your state (provinces) Department of Motor Vehicles.

SAFE USE AND OPERATION RULES

1. TOWING VEHICLE—

- Make sure vehicle is capable of towing the load.
- Excess speed is the second most important cause of car trailer accidents. Recommended maximum speed for all passenger cars towing trailers is 45 M.P.H.

2. HITCH, BALL, COUPLER—

- Check that the hitch on the towing vehicle is capable of towing the trailer. The towing capability of the hitch is normally stamped on hitch drawbar.
- Make sure the coupler and the ball are mating sizes and are rated equal to or greater than the load.
- Never attach anything other than the proper size coupler to the ball for towing.

3. SAFETY CHAINS—

- Be sure to use safety chains.
- Check that safety chains are attached to towing vehicle with the same length for each side.
- Do not allow chains to drag on ground.

4. LOADING—

- Never overload trailer. Maximum load is 1,845 LBS.
- Load trailer evenly from side to side with 60% of the load forward to the axle. It is important that the tongue be pressing down on the hitch, but not exceeding a downward force of 150 LBS.
- Reduce weight in car trunk and rear seat areas by amount of tongue weight of your trailer.
- It is against the law to carry passengers in the back of any trailer.

5. LIGHTING—

—Check lighting before each use and every 100 miles to be sure stop tail and turn signals are working properly.

Replace any broken lenses, reflectors or bulbs.

—Check wires for good connections and possible fraying or wearing of insulation.

—Bulbs supplied with this trailer are for 12 volt system.

—Bulbs used in tail light are: Number — 1157 — Stop and Tail.

—Bulb for clearance is: Number — 1895.

6. TIRES—

—Check tire for wear and proper inflation before each use and every 100 miles.

—Tire pressure should be kept at 80PSI.

—Check and tighten lug nuts. Torque to 85-90 FT-LBS.

Retorque after first 50 miles.

7. OPERATION—

—Know how to properly control your towing vehicle-trailer combination on the highway under all conditions. Remember the loaded weight of the trailer will increase your braking and stopping distances appreciably.

—When towing a trailer over long distances stop and check tightness of all connections lights and running gear every 100 miles.

—Carry emergency flares, and fire extinguisher if required for operation in your state.

—It is desirable to carry extra bulbs and fuses if you are towing the trailer at night over any great distances.

8. MAINTENANCE—

—Check and maintain the trailer, coupler, ball and hitch before each use and every 200 miles.

—Inspect hitch and ball for damage in every day use.

—Ball or hitch can be damaged in parking, hitting curbs, dragging when crossing ditches or railroad tracks.

—Check safety chains for wear, and do not allow safety chains to drag on ground.

—To prevent bearing damage, disassemble and repack wheel bearing with a good grade of wheel bearing grease every 2000-3000 miles or yearly.

—If you don't know how to repack wheel bearing, take your trailer to a garage for advice.

IMPORTANT

The purpose of following notices are to give you tips on safe use and operation of your utility trailer.

1. Please read the instructions carefully and follow them step-by-step for easy assembly. And please keep the instruction in your hand no less than 1 year.
2. Please double check the assembling step-by-step, be sure each is followed.
3. Please according to our Trailer Licensing Notice (on page 10) apply for a license for the trailer.
4. Before using, please inspect your trailer.
5. Do not remove the sticker notice from the towbar.

Notice:

- * Re fill grease on bearing after every 3,000 miles of use.
- * Keep tire pressure at 80 p.s.i. cold.
- * Please insure you comply with the following before using your trailer.
 1. Tighten U-bolt.
 2. Tighten lug nut.
 3. Tighten trigger lock on coupler.
 4. Hook up safety chain.
 5. Trailer load should not exceed its 1845 lbs capacity and should be properly secured.
 6. Trailer load size should not exceed trailer's bed board size.

Correct way to load your trailer

